



SANDERSON FIELD R.C. NEWS



CHARTER NO. 3079

Christmas party/Elections

CLUB MEETING

*This months meeting will be held
on Thursday Dec. 14th at 7:00 p.m.*

at PUD #3

At 3rd & Cota

DON'T FORGET YOUR HOBBY RELATED
GIFT FOR THE GIFT EXCHANGE. NON
FLYERS BRING NON HOBBY RELATED
GIFTS.

We had another operator error on
the tape recorder last month so the
minutes are from memory (poor at
best) be sure and correct anything
that needs it at the meeting.

Minutes read and accepted as
read.

Treasurer's report read and
accepted as read.

Jody Diaz asked for nominations
from the floor... Since there
weren't any he said we'll take
them at the December meeting if
there are any.

Write on the back of your ballot for
any write-ins.

It was decided to have a partial
pot luck for the Christmas party,
Sharon Diaz would cook a turkey,
Dave Fisher would cook a ham and
we would buy two complete prime

rib dinners from Safeway. Try to
get some extra condiments and also
try to schedule them for pickup
near dinner time.

Send an e-mail about the party and
ask for RSVP.

Meeting adjourned at 7:30.



Merry Christmas

**The Puyallup Expo is on
again this year on Feb
2-4 There is a link on our
web sit or go to [http://
www.nwhobbyexpo.com/](http://www.nwhobbyexpo.com/)**

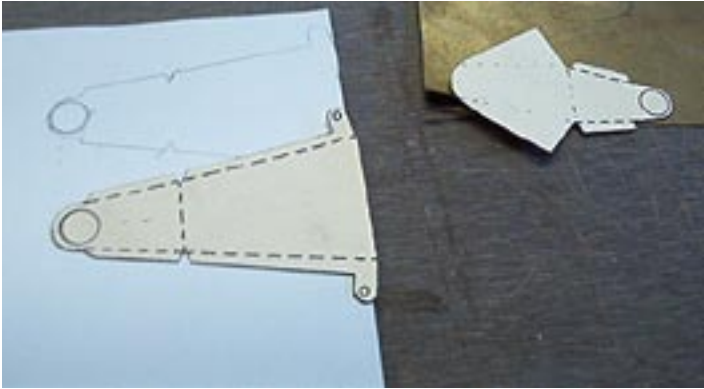


Rubber Bands Don't Hold in the Cold

This is probably one that many
don't know about, but a tempera-
ture of anything below 40° is too

cold for rubber bands. I've
experienced it personally and
it's not a good feeling watching
the wing separate from the fuse-
lage as you're flying across the
field. Actually you stare at the
wing because it flutters slowly
down like a leaf, while all of the
important stuff in the fuselage
does a kamikaze dive into the
woods. So keep those models
where the wing or anything else
is held on by rubber bands home
when it's cold. This holds true for
glow and electric models. After
all, rubber bands are rubber bands.

Custom F6F Tail wheel retract (continued)



First cut out your fairings, one is aluminum flashing and the other is .005 brass sheet. Hal used tin for the smaller wheel fairing, just use whatever you have that can be soldered. When cutting the templates cut inside the line so that when you trace them they are not too big.



I use a Dremel with a drill bit to enlarge the hole to the required 5/16". Just work it in a circular motion, it will cut very easily.



Smooth out the metal before bending it.



Fold the thin brass wheel fairing as shown. We'll solder it later after all parts are cut. (Also see figure 1 and 2 on page 3).

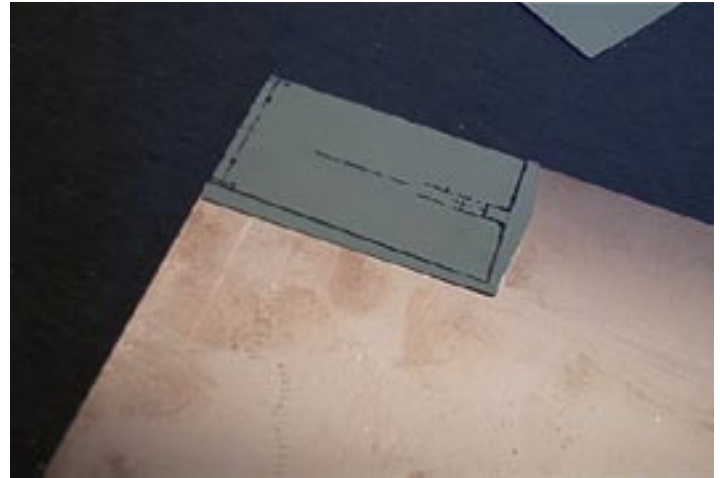


Mark your fold lines on both pieces.

Custom F6F Tail wheel retract (continued)



Figure 1



Now cut your PC Board parts. I like to work in corners with whatever I can, saves time. I cut the template out on the edges that don't need to be cut. Align it in the corner and then score it with an exacto knife. I use this same technique on all the parts.

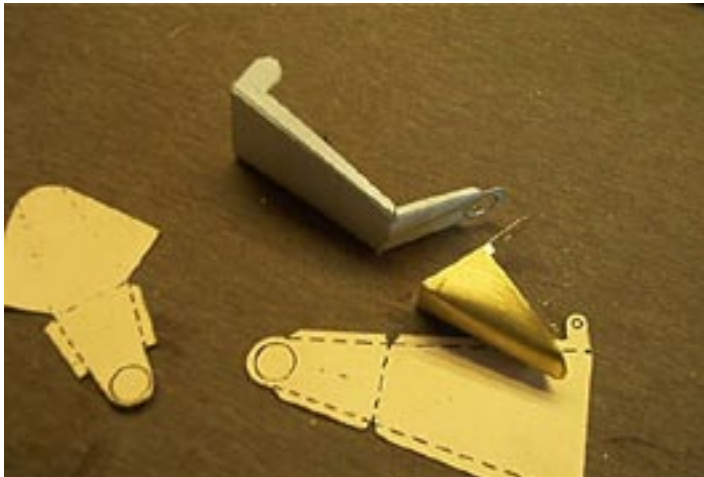


Figure 2



DUES ARE \$40 AFTER JAN 1ST. PAY EARLY TO SAVE \$10.

IF YOU PAY BY MAIL SEND YOUR DUES, PROOF OF 2007 AMA MEMBERSHIP AND A SELF ADDRESSED STAMPED ENVELOPE TO THE TREASURER:

**CHUCK KENTFIELD
3122 Madrona Beach Rd
Olympia WA 98502**

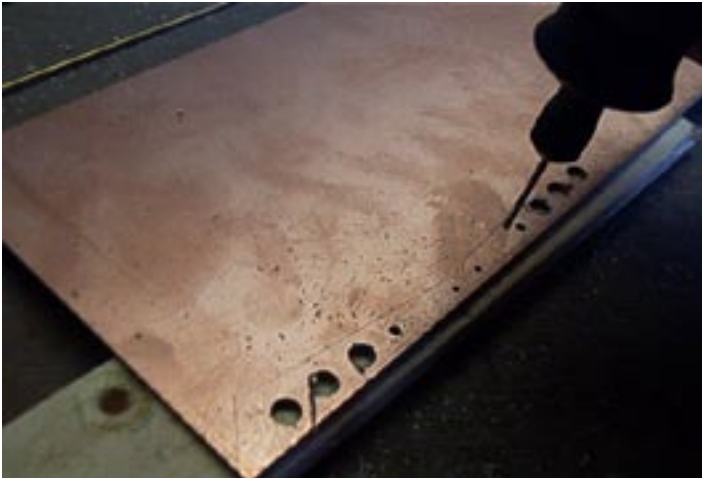
CLUB OFFICERS

President.....	Jody Diaz	(360)427-6102
Vice President	Dick Robb.....	(360)427-4521
Treasurer	Charles Kentfield	(360)866-9473
Secretary	Bob Beatty	(360)426-5601
Field Marshall	Charles Kentfield	(360)866-9473
Safety Officer.....	John Tupper	(360)426-6383

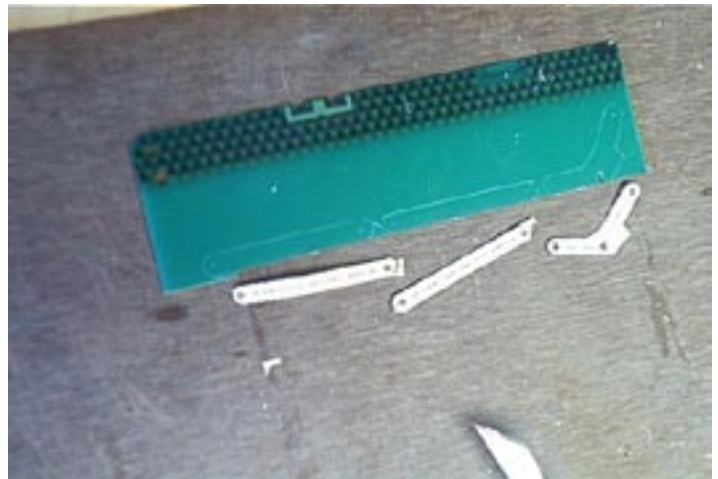
BOARD MEMBERS

Board Member	Jody Diaz	(360)427-6102
Board Member	Dick Robb.....	(360)427-4521
Board Member	Stacy Myers	(360)426-9367
Board Member	Bob Beatty	(360)426-5601
Board Member	Dave Southwick.....	(360)426-2869
Alt Board Member	Bob Mason.....	(360)426-9256
Alt Board Member	Chuck Kentfield.....	(360)866-9473

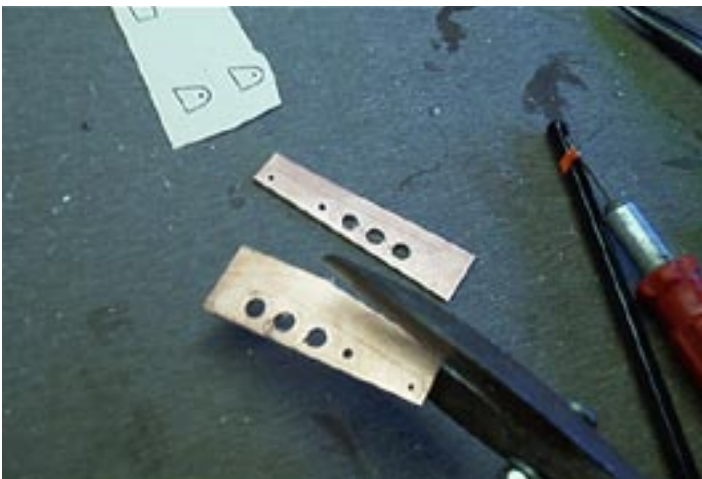
Custom F6F Tail wheel retract (continued)



For the main forks with the holes, you need to drill all holes before cutting out the part. Don't try it any other way you'll rip your finger off in the drill press! For the holes I drilled two large $7/32$ " holes on each fork and one $13/64$ " hole. The retract unit pivots on the smaller end hole at the end, drill this to fit a $.064$ " brass rod. The smaller hole in the middle is the attachment point for the lifting arms, Drill this for a $3/32$ " brass tube.



The control arms were cut out of the green PC board because they are held together with bolts and no solder is needed.



I use a large pair of tin snips to cut the parts out but not up to the line yet, just get as close as you can without damaging the part.

To finish the parts use a bench-mounted disk sander. The smaller area on the parts will cut very fast so be careful not to ruin your part.



On the wheel forks a Dremel works very well on the concave part.

Cut your brass with a tube cutter.



Great! Most of the parts are cut!

Only missing parts are a small PC board washer and control arm, we'll cut those later.

Convenient Cleanup

Want a nice, neat, convenient way to clean up that airplane? Use baby wipes—those soft wipe tissues that come under various brand names and are packaged in handy plastic boxes. The wipes

must contain some kind of cleaning agent because they remove oil well and the lanolin acts like a polish.

Marking Dark Monokote

Putting any kind of decent marks on Monokote is difficult,

especially if the Monokote is dark in color. This becomes a hassle for you when trying to accurately place control horns or mount a switch to a surface that's already covered.

Try putting down a piece of masking tape in the approximate location then line up the horn or switch plate and make your marks on the tape. The marks are visible and you can cut or drill right through the tape. You can pull the tape off easily by pulling it sideways over itself—don't pull straight up or you may lift off the covering.

—both from Hangar Talk Orange City, Iowa

BELOW ARE THE SCHEDULED EVENTS FOR 2006

Club Scheduled Events for 2006

- January 15th.....Pylon Race
- February 12th.....Pylon Race
- March 12thPylon Race
- April 15thSanderson Field RC flyers annual swap meet 9:00 to 12:00 SHS Sub
- May 27th.....Fly-In - 9:00 a.m. to ?????
- June 3rd.....Forest festival Parade float
- June 10th.....Display at Walmart
- June 11thPublic Fly-In
- July 15th.....fly-in with novice fun fly - 9:00 a.m. to ?????
- August 12th & 13th.Pylon Race
- August 19th.....Scale fly-in with novice fun scale event - 9:00 a.m. to ????
- September 16th.....Fly-In 9:00 a.m. to ????
- September 23rd24thDistrict Championship Pylon Race
- October 8th.....Pylon Race 9:00 to 4:00
- November 12th.....Pylon Race 9:00 to 4:00
- December 14thChristmas Party 7:00 pm at PUD Auditorium

It's time for 2007 dues, dues are \$30.00 before Jan. 1st, \$40.00 after.

You can pay your dues before you get your AMA 07 card but you won't get a club card till you get the AMA card.

Check out our web site at <http://sfrfc.quintex.com>